

K2 POWER ES 100 K

Woofer 4"

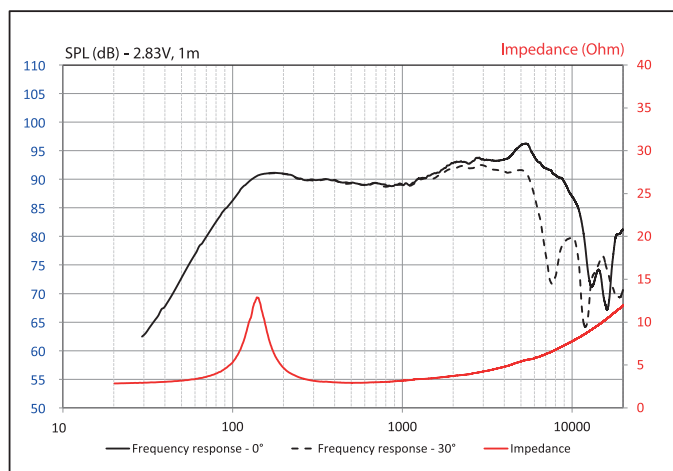


- K2 Power sandwich cone
- "TMD" surround (patented technology)
- Aluminum compact basket
- Neodymium motor

SPECIFICATIONS

Nominal power	60W	
Maximum power	120W	
Sensitivity (2,83V/1m)	90dB	
Cone	Kevlar sandwich	
Nom. impedance	4Ω	
Surround	Butyl	
DC resistance	2.8Ω	
VC diameter	25mm	Ø25±0.2"
Former	Kapton	
Layers	2	
Wire	CCA	
Net weight	215g	0.47lbs

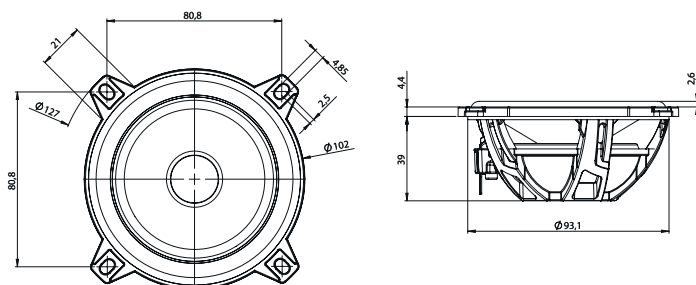
FREQUENCY RESPONSE/IMPEDANCE



PARAMETERS

Rdc	2.8 Ω
Fs	140Hz
Mms	4.7g
Cms	0.26mm/N
Vas	1l
Qts	0.9
Qes	1.1
Qms	4.2
Bxl	3.3 N/A
Sd	54cm ²
SPL	87.5dB
Xmax	2.3mm

MECHANICAL DRAWING



Elite

"HAUTE COUTURE" SOUND



FOCAL[®]
THE SPIRIT OF SOUND